

# SECURITY/DRUM LENSES



CROWN  
PLASTICS



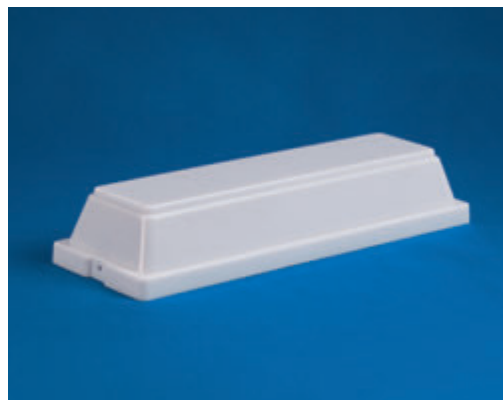
## Series 84202

### DESCRIPTION

Crown Plastics security enclosures are designed for commercial and residential pendant, canopy, and wall applications.

### MATERIALS

- **Acrylic** - UV resistant with continuous operating temperature up to 90°C and transmittance of 92% (application dependent). Acrylic security enclosures are available in white.



ITEM NO.	HEIGHT	WIDTH	LENGTH	MATERIAL	COLOR
84202-WH	2.44"	4.53"	13.38"	Acrylic	White

### MAXIMUM TEMPERATURES

No warranty or guarantee is expressed or implied as only the user can determine the suitability of a product for his or her purpose.

Maximum working temperature is 90° C for Acrylic depending on products chosen.

Actual wattage ratings are influenced by many factors including Fixture Type, Bulb Location and Ambient Temperature.

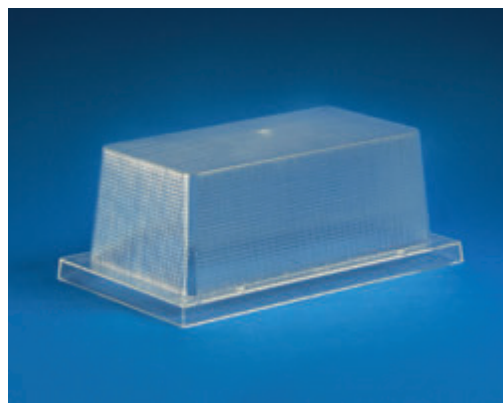
## Series 84203

### DESCRIPTION

Crown Plastics security enclosures are designed for commercial and residential pendant, canopy, and wall applications.

### MATERIALS

- **Polycarbonate** - UV stabilized with continuous operating temperature of 100°C to 125°C and high impact resistance down to -40°C, transmittance of 88% (application dependent). Polycarbonate security enclosures are available in clear.
- **Acrylic** - UV resistant with continuous operating temperature up to 90°C and transmittance of 92% (application dependent). Acrylic security enclosures are available in clear.
- **LD Acrylic (Visual Comfort)** - UV resistant with continuous operating temperature up to 90°C and transmittance of 90% to 94% (application dependent).



ITEM NO.	HEIGHT	WIDTH	LENGTH	MATERIAL	COLOR
84203-CL	4.01"	6.03"	10.50"	Acrylic	Clear
84203-LD	4.01"	6.03"	10.50"	LD Acrylic	VC Frost
84203-CC	4.01"	6.03"	10.50"	Polycarbonate	Clear

### MAXIMUM TEMPERATURES

No warranty or guarantee is expressed or implied as only the user can determine the suitability of a product for his or her purpose.

Maximum working temperature is 90° C for Acrylic and between 100° C and 125° C for Polycarbonates, depending on products chosen.

Actual wattage ratings are influenced by many factors including Fixture Type, Bulb Location and Ambient Temperature.

Dimensions are nominal

## Series 84204

### DESCRIPTION

Crown Plastics security enclosures are designed for commercial and residential pendant, canopy, and wall applications.

### MATERIALS

- **Polycarbonate** - UV stabilized with continuous operating temperature of 100°C to 125°C and high impact resistance down to -40°C, transmittance of 88% (application dependent). Polycarbonate security enclosures are available in clear.
- **Acrylic** - UV resistant with continuous operating temperature up to 90°C and transmittance of 92% (application dependent). Acrylic security enclosures are available in clear.
- **LD Acrylic (Visual Comfort)** - UV resistant with continuous operating temperature up to 90°C and transmittance of 90% to 94% (application dependent).



ITEM NO.	HEIGHT	WIDTH	LENGTH	MATERIAL	COLOR
84204-CL	4.00"	5.35"	7.66"	Acrylic	Clear
84204-LD	4.00"	5.35"	7.66"	LD Acrylic	VC Frost
84204-CC	4.00"	5.35"	7.66"	Polycarbonate	Clear

### MAXIMUM TEMPERATURES

No warranty or guarantee is expressed or implied as only the user can determine the suitability of a product for his or her purpose.

Maximum working temperature is 90° C for Acrylic and between 100° C and 125° C for Polycarbonates, depending on products chosen.

Actual wattage ratings are influenced by many factors including Fixture Type, Bulb Location and Ambient Temperature.

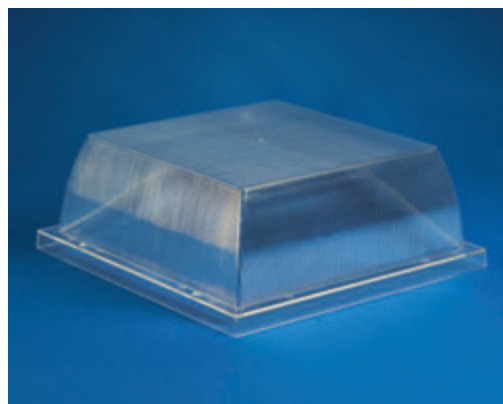
## Series 84205

### DESCRIPTION

Crown Plastics security enclosures are designed for commercial and residential pendant, canopy, and wall applications.

### MATERIALS

- **Polycarbonate** - UV stabilized with continuous operating temperature of 100°C to 125°C and high impact resistance down to -40°C, transmittance of 88% (application dependent). Polycarbonate security enclosures are available in clear.
- **Acrylic** - UV resistant with continuous operating temperature up to 90°C and transmittance of 92% (application dependent). Acrylic security enclosures are available in clear.
- **LD Acrylic (Visual Comfort)** - UV resistant with continuous operating temperature up to 90°C and transmittance of 90% to 94% (application dependent).



ITEM NO.	HEIGHT	WIDTH	LENGTH	MATERIAL	COLOR
84205-CL	4.01"	10.63"	10.63"	Acrylic	Clear
84205-LD	4.01"	10.63"	10.63"	LD Acrylic	VC Frost
84205-CC	4.01"	10.63"	10.63"	Polycarbonate	Clear

### MAXIMUM TEMPERATURES

No warranty or guarantee is expressed or implied as only the user can determine the suitability of a product for his or her purpose.

Maximum working temperature is 90° C for Acrylic and between 100° C and 125° C for Polycarbonates, depending on products chosen.

Actual wattage ratings are influenced by many factors including Fixture Type, Bulb Location and Ambient Temperature.

Dimensions are nominal

## Series 84206

### DESCRIPTION

Crown Plastics security enclosures are designed for commercial and residential pendant, canopy, and wall applications.

### MATERIALS

- **Polycarbonate** - UV stabilized with continuous operating temperature of 100°C to 125°C and high impact resistance down to -40°C, transmittance of 88% (application dependent). Polycarbonate security enclosures are available in clear.
- **Acrylic** - UV resistant with continuous operating temperature up to 90°C and transmittance of 92% (application dependent). Acrylic security enclosures are available in clear.
- **LD Acrylic (Visual Comfort)** - UV resistant with continuous operating temperature up to 90°C and transmittance of 90% to 94% (application dependent).



ITEM NO.	HEIGHT	WIDTH	LENGTH	MATERIAL	COLOR
84206-CL	2.38"	4.50"	13.06"	Acrylic	Clear
84206-LD	2.38"	4.50"	13.06"	LD Acrylic	VC Frost
84206-CC	2.38"	4.50"	13.06"	Polycarbonate	Clear

### MAXIMUM TEMPERATURES

No warranty or guarantee is expressed or implied as only the user can determine the suitability of a product for his or her purpose.

Maximum working temperature is 90° C for Acrylic and between 100° C and 125° C for Polycarbonates, depending on products chosen.

Actual wattage ratings are influenced by many factors including Fixture Type, Bulb Location and Ambient Temperature.

## 11" Drum Lens

### DESCRIPTION

Crown Plastics drum lenses are designed for ceiling and wall mount commercial and residential applications.

### MATERIALS

- **Acrylic** - UV resistant with continuous operating temperature up to 90°C and transmittance of 92% (application dependent). Acrylic drum lenses are available in white.



ITEM NO.	HEIGHT	DIA	MATERIAL	COLOR
25011-WH	2.81"	11.20"	Acrylic	White

### MAXIMUM TEMPERATURES

No warranty or guarantee is expressed or implied as only the user can determine the suitability of a product for his or her purpose. Maximum working temperature is 90° C for Acrylic and between 100° C and 125° C for Polycarbonates, depending on products chosen. Actual wattage ratings are influenced by many factors including Fixture Type, Bulb Location and Ambient Temperature.

## 14" Drum Lens

### DESCRIPTION

Crown Plastics drum lenses are designed for ceiling and wall mount commercial and residential applications.

### MATERIALS

- **Acrylic** - UV resistant with continuous operating temperature up to 90°C and transmittance of 92% (application dependent). Acrylic drum lenses are available in white.



ITEM NO.	HEIGHT	DIA	MATERIAL	COLOR
25014-WH	3.00"	14.00"	Acrylic	White

### MAXIMUM TEMPERATURES

No warranty or guarantee is expressed or implied as only the user can determine the suitability of a product for his or her purpose. Maximum working temperature is 90° C for Acrylic and between 100° C and 125° C for Polycarbonates, depending on products chosen. Actual wattage ratings are influenced by many factors including Fixture Type, Bulb Location and Ambient Temperature.

### ITEM NUMBER SUFFIX CODES

STYLE NUMBER	COLOR
2501X = Acrylic	WH = WHITE

Dimensions are nominal