

# ACCESSORIES



CROWN  
PLASTICS

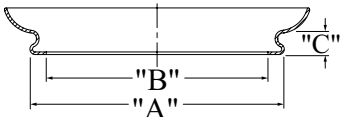
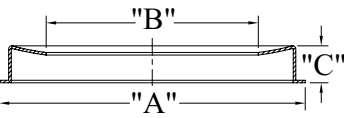

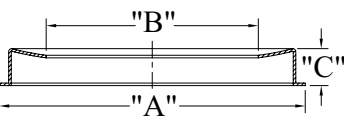
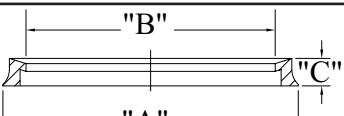
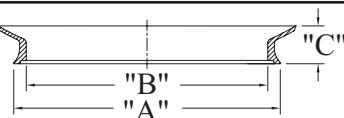
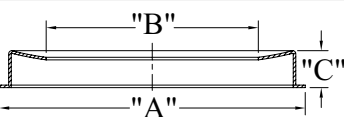


## Neck Fitters

### DESCRIPTION

Crown Plastics neck fitters are designed to be used with commercial and residential spheres in post top and pendant applications. See chart for materials and colors available.



| STYLE   | ITEM NO.        | A<br>(NECK OD) | B<br>(NECK ID) | C<br>(HEIGHT) | MATERIAL      | COLOR  |
|---|-----------------|----------------|----------------|---------------|---------------|--------|
|    | 98003-A         | 3.10"          | 2.88"          | .50"          | Aluminum      | Silver |
|   | 98004-A         | 3.89"          | 3.38"          | .44"          | Aluminum      | Silver |
|    | 98005-A         | 5.00"          | 3.34"          | .62"          | Aluminum      | Silver |
|    | 98006-P         | 6.00"          | 4.73"          | .75"          | Polycarbonate | Black  |
|    | 98007-A         | 7.00"          | 5.69"          | .63"          | Aluminum      | Silver |
|   | 98007.5-A       | 7.50"          | 6.00"          | .81"          | Aluminum      | Silver |
|  | 98008-P         | 8.00"          | 6.75"          | .75"          | Polycarbonate | Black  |
|  | 98008-PSPEC-WHT | 8.00"          | 7.19"          | 1.14"         | Polycarbonate | White  |
|   | 98008-PSPEC-BLK | 8.00"          | 7.19"          | 1.14"         | Polycarbonate | Black  |
|  | 98009-A         | 9.00"          | 7.50"          | .62"          | Aluminum      | Silver |
|   | 98010-A         | 10.00"         | 8.25"          | .69"          | Aluminum      | Silver |


## Split Neck Fitters

### DESCRIPTION

Crown Plastics aluminum split fitters are designed for commercial and residential applications for use with street lamps with 8F and 9F necks. The Split Fitter gives additional reinforcement to the structural integrity of the neck when securing to post tops.

**Split Neck Fitters** are available in aluminum.



| STYLE   | ITEM NO.     | DESCRIPTION   | MATERIAL | COLOR  |
|---|--------------|---------------|----------|--------|
|  | 98-SPLIT-8.5 | Fits 8F Necks | Aluminum | Silver |
|   | 98-SPLIT-9   | Fits 9F Necks | Aluminum | Silver |

Dimensions are nominal

## Aluminum Heat Shields

### DESCRIPTION

Crown Plastics **Externally Mounted Aluminum Heat Shields** are designed for use with commercial and residential spheres.

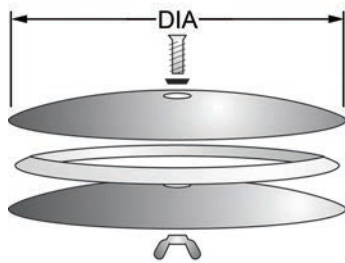
Crown Plastics **Internally Mounted Heat Shields** are designed for use with commercial and residential spheres and street lamps in post top applications.

### MATERIALS

Crown Plastics **External Heat Shields** are available aluminum painted white or black, **Internal Heat shields** are available in raw aluminum.

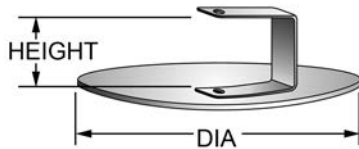


### EXTERNALLY MOUNTED



| ITEM NO.  | FITS GLOBE SIZE    | DISK O.D | MATERIAL | COLOR |
|-----------|--------------------|----------|----------|-------|
| 96005-BLK | 10", 12", 14", 16" | 5.00"    | Aluminum | Black |
| 96005-WHT | 10", 12", 14", 16" | 5.00"    | Aluminum | White |
| 96007-BLK | 18", 20", 22", 24" | 7.50"    | Aluminum | Black |
| 96007-WHT | 18", 20", 22", 24" | 7.50"    | Aluminum | White |

### INTERNALLY MOUNTED



| ITEM NO. | FITS GLOBE SIZE    | DISK O.D | BRACKET HEIGHT | MATERIAL | COLOR  |
|----------|--------------------|----------|----------------|----------|--------|
| 96104-A  | 10", 12", 14", 16" | 4.00"    | 4.25"          | Aluminum | Silver |
| 96106-A  | 18", 20", 22"      | 6.00"    | 4.25"          | Aluminum | Silver |
| 96108-A  | STREET LAMPS       | 8.00"    | 9.50"          | Aluminum | Silver |

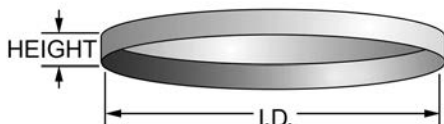
## Polycarbonate Top Caps

### DESCRIPTION

Crown Plastics Polycarbonate top caps are designed for commercial and residential applications for use with 12" and 15" cubes.

### MATERIALS

Crown Plastics **Top Caps** are available in black or white polycarbonate.



| ITEM NO.  | DISK I.D. | HEIGHT | MATERIAL      | COLOR |
|-----------|-----------|--------|---------------|-------|
| 97000-BLK | 6.50"     | .56"   | Polycarbonate | Black |
| 97000-WHT | 6.50"     | .56"   | Polycarbonate | White |

Dimensions are nominal

## Post Top Fitters

### DESCRIPTION

Crown Plastics post top fitters are designed for use with commercial and residential post top applications.

### MATERIALS

Crown Plastics Post Top Fitters are available in polycarbonate.



### 5.25" POLYCARBONATE FITTER



| ITEM NO.    | DESCRIPTION   | MATERIAL      | COLOR |
|-------------|---|---------------|-------|
| 99-S071-BLK | <ul style="list-style-type: none"> <li>• Phenolic Incandescent Socket</li> <li>• Fits Standard 3" Post</li> </ul> | Polycarbonate | Black |
| 99-S071-WHT | <ul style="list-style-type: none"> <li>• Accepts Most Enclosures with a 5.25" Neckless Opening</li> </ul>         | Polycarbonate | White |

### 5.25" POLYCARBONATE FITTER NO SOCKET



| ITEM NO.    | DESCRIPTION  | MATERIAL      | COLOR |
|-------------|--|---------------|-------|
| 99-S072-BLK | <ul style="list-style-type: none"> <li>• 7/16" Dia. Center Hole for 1/8" IPS</li> <li>• Fits Standard 3" Post</li> </ul> | Polycarbonate | Black |
| 99-S072-WHT | <ul style="list-style-type: none"> <li>• Accepts Most Enclosures with a 5.25" Neckless Opening</li> </ul>                | Polycarbonate | White |

### 4" TWIST LOCK POLYCARBONATE FITTER



| ITEM NO.    | DESCRIPTION   | MATERIAL      | COLOR |
|-------------|---|---------------|-------|
| 99-S048-BLK | <ul style="list-style-type: none"> <li>• Phenolic Incandescent Socket</li> <li>• Fits Standard 3" Post</li> </ul> | Polycarbonate | Black |
| 99-S048-WHT | <ul style="list-style-type: none"> <li>• Accepts Most Enclosures with a 4" Twist Lock Neck</li> </ul>             | Polycarbonate | White |

Dimensions are nominal



## Series 98-ATOP-WASH

### DESCRIPTION

Crown Plastics 98-ATOP-WASH is designed for commercial and residential post top applications. It can be used with the 60 Series, 62 Series and 66 Series Street Lamps.

### MATERIALS

Crown Plastics Series **98-ATOP-WASH** are available in aluminum.

| ITEM NO.     | HEIGHT | ID (BOTTOM) | MATERIAL | COLOR  |
|--------------|--------|-------------|----------|--------|
| 98-ATOP-WASH | 9.13"  | 11.66"      | Aluminum | Silver |



## Series 98-ATOP-WASH-66

### DESCRIPTION

Crown Plastics 98-ATOP-WASH-66 is designed for commercial and residential post top applications. It can be used with the 66 Series Street Lamps.

### MATERIALS

Crown Plastics Series **98-ATOP-WASH-66** are available in aluminum.

| ITEM NO.        | HEIGHT | ID (BOTTOM) | MATERIAL | COLOR  |
|-----------------|--------|-------------|----------|--------|
| 98-ATOP-WASH-66 | 13.18" | 16.56"      | Aluminum | Silver |



Painting and assembly available on request.

## Series 98-ATOP-WASH-88230

### DESCRIPTION

Crown Plastics 98-ATOP-WASH-88230 is designed for commercial and residential post top applications. It can be used with the 88230-CL.

### MATERIALS

- Crown Plastics Series **98-ATOP-WASH-88230** are available in aluminum.

| ITEM NO.           | HEIGHT | ID (BOTTOM) | MATERIAL | COLOR  |
|--------------------|--------|-------------|----------|--------|
| 98-ATOP-WASH-88230 | 9.10"  | 12.03"      | Aluminum | Silver |



Dimensions are nominal

## 86280 Top

### DESCRIPTION

Crown Plastics textured streetlamp tops are designed for commercial and residential post top application.

### MATERIALS

- **Acrylic** - UV resistant with continuous operating temperature up to 80°C. Maximum transmittance of 92% (clear). Acrylic streetlamp tops are available in clear, frost, clear stippled, and white.
- **Polycarbonate** - UV stabilized with continuous operating temperature of 100°C to 125°C and high impact resistance down to -40°C. Polycarbonate streetlamp tops are available in black.



| ITEM NO.                      | HEIGHT | ID (BOTTOM) | OD (BOTTOM) | MATERIAL      | COLOR                                     |
|-------------------------------|--------|-------------|-------------|---------------|---|
| 86280C-XX (fits 25920)        | 8.75"  | 15.46"      | 15.53"      | Acrylic       | Clear, LD Frost, Clear Stippled, or White |
| 86280C-BK (fits 25920)        | 8.75"  | 15.46"      | 15.53"      | Polycarbonate | Black                                     |
| 86280L-XX (fits lexalite 425) | 8.75"  | 15.53"      | 15.60"      | Acrylic       | Clear, LD Frost, Clear Stippled, or White |
| 86280L-BK (fits lexalite 425) | 8.75"  | 15.53"      | 15.60"      | Polycarbonate | Black                                     |

## 88230 Top

### DESCRIPTION

Crown Plastics textured streetlamp tops are designed for commercial and residential post top application. Fits 25920 bottom and Lexalite 425 bottom.

### MATERIALS

- **Acrylic** - Impact modified and UV resistant with continuous operating temperature up to 80°C. Maximum transmittance of 92% (clear). Acrylic streetlamp tops are available in clear.

| ITEM NO. | HEIGHT | ID (BOTTOM) | MATERIAL | COLOR |
|----------|--------|-------------|----------|-------|
| 88230-CL | 13.22" | 15.52"      | Acrylic  | Clear |



## Series 99 Finial

### DESCRIPTION

Crown Plastics finials are designed for commercial and residential post top and pendant applications. Finials can be used with Street Lamp Globes.

### MATERIALS

- **Polycarbonate** - UV stabilized with continuous operating temperature of 100°C to 125°C and high impact resistance down to -40°C. Polycarbonate finials are available in black.

| ITEM NO.      | HEIGHT | OD (BOTTOM) | MATERIAL      | COLOR |
|---------------|--------|-------------|---------------|-------|
| 99-FINIAL-BLK | 5.00"  | 3.25"       | Polycarbonate | Black |



Dimensions are nominal

## Series 89103 Chimney

### DESCRIPTION

Crown Plastics smooth chimney is designed to be used with commercial and residential LED post top applications. Our 89103 Chimney is for decorative purposes only. Not for use with incandescent lamps.

### MATERIALS

- **Polyethylene** - Impact resistant and offers an affordable cost solution for light housings. Polyethylene chimneys are available in white.

| ITEM NO. | HEIGHT | OD (BOTTOM) | OD (TOP) | MATERIAL     | COLOR |
|----------|--------|-------------|----------|--------------|-------|
| 89103-WH | 8.50"  | 2.90"       | 2.00"    | Polyethylene | White |



## Post Sleeve

### DESCRIPTION

Crown Plastics decorative fluted post sleeves fit standard 3" post and are available in 10' lengths. Post sleeves are designed for commercial and residential post applications.

### MATERIALS

- **Polyethylene** - Impact resistant and offers an affordable cost solution for post housings. Polyethylene post sleeves are available in black.

| ITEM NO.  | LENGTH | MATERIAL     | COLOR |
|-----------|--------|--------------|-------|
| 89010-BLK | 10.00' | Polyethylene | Black |



## Post Base Cover

### DESCRIPTION

Crown Plastics post base covers fit standard 3" post.

### MATERIALS

- **Polyethylene** - Impact resistant and offers an affordable cost solution for light housings. Polyethylene base covers are available in black.

| ITEM NO.  | HEIGHT | OD (BOTTOM) | OD (TOP) | MATERIAL     | COLOR |
|-----------|--------|-------------|----------|--------------|-------|
| 89000-BLK | 24.00" | 13.00"      | 5.50"    | Polyethylene | Black |



Dimensions are nominal

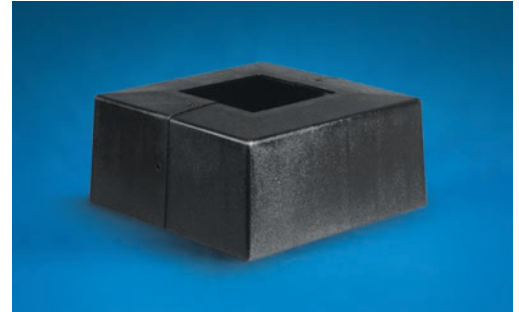
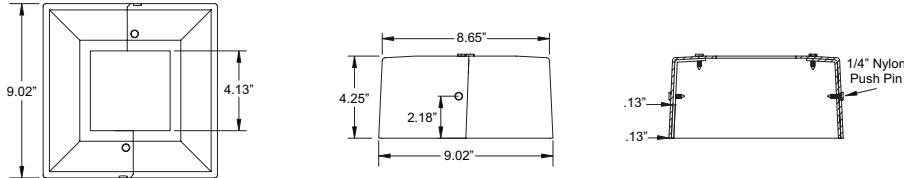
## Small Post Base Cover

### DESCRIPTION

Crown Plastics post base covers fit standard 4" square posts. Other hole sizes available upon request.

### MATERIALS

- **Polycarbonate** - UV stabilized with high impact resistance down to -40°C. Polycarbonate post base covers are available in black, white or bronze.



| ITEM NO. | COLOR  |
|----------|--------|
| 84211-BC | Black  |
| 84211-WC | White  |
| 84211-BZ | Bronze |

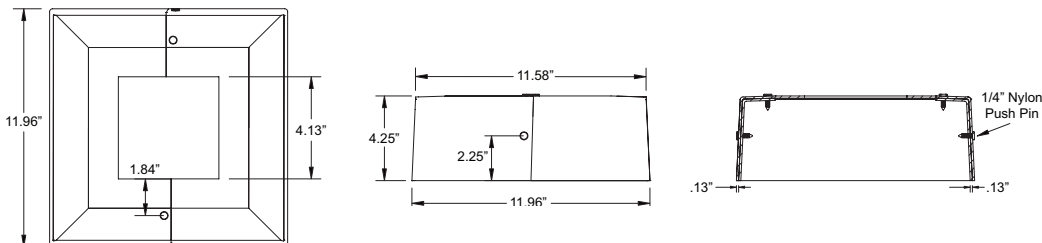
## Medium Post Base Cover

### DESCRIPTION

Crown Plastics post base covers fit standard 4" square posts. Other hole sizes available upon request.

### MATERIALS

- **Polycarbonate** - UV stabilized with high impact resistance down to -40°C. Polycarbonate post base covers are available in black, white or bronze. Call for custom colors.



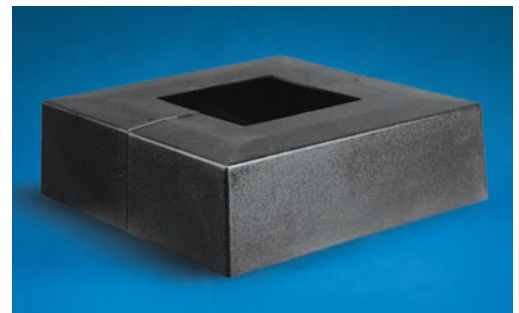
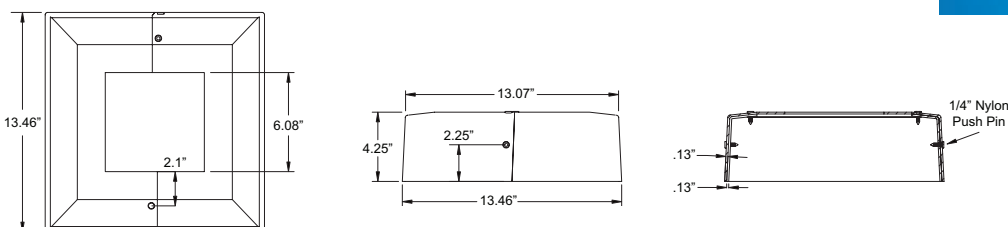
| ITEM NO. | COLOR  |
|----------|--------|
| 84212-BC | Black  |
| 84212-WC | White  |
| 84212-BZ | Bronze |

## Large Post Base Cover

### DESCRIPTION

Crown Plastics post base covers fit standard 6" square posts. Other hole sizes available upon request.

**Polycarbonate** - UV stabilized with high impact resistance down to -40°C. Polycarbonate post base covers are available in black, white or bronze. Call for custom colors.



| ITEM NO. | COLOR  |
|----------|--------|
| 84213-BC | Black  |
| 84213-WC | White  |
| 84213-BZ | Bronze |

Dimensions are nominal



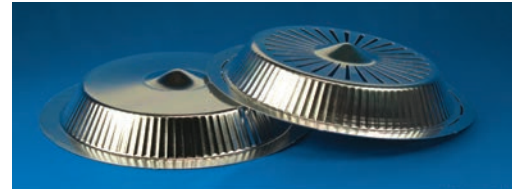
## 425 Optical Refractor Lite Lids

### DESCRIPTION

425 Optical Refractor Lite Lids are designed for commercial and residential post top 88230ALEX street lamp assemblies with Lexalite 425 bottoms only.

### MATERIALS

Lite Lids are available in aluminum perforated and non-perforated reflectors.



| ITEM NO.   | DESCRIPTION            | DIAMETER |
|------------|------------------------|----------|
| 99-LL15-P  | Perforated Litelid     | 15.15"   |
| 99-LL15-NP | Non-perforated Litelid | 15.15"   |

Dimensions are nominal